



PRECALCULUS EMPORIUM



← $s(t)$

NEW LEARNING MODELS: MOVING THE MATH EMPORIUM ONLINE

The Future of the Textbook Symposium
October 24, 2014

t

$t + \Delta t$

Presenters

KRIS BIESINGER

PROJECT MANAGER, ONLINE PRECALCULUS EMPORIUM
UNIVERSITY OF GEORGIA

MYK GARN

ASSISTANT VICE CHANCELLOR FOR NEW LEARNING MODELS
UNIVERSITY SYSTEM OF GEORGIA

CHARLES KUTAL

DIRECTOR, OFFICE OF STEM EDUCATION
ASSOCIATE DEAN & CHEMISTRY PROFESSOR
UNIVERSITY OF GEORGIA



AGENDA

WHY PRECALCULUS?

THE EMPORIUM MODEL

THE EVOLVING DESIGN

NEXT STEPS

STEM Challenges

48 PERCENT OF BACHELOR'S DEGREE STUDENTS AND 69 PERCENT OF ASSOCIATE'S DEGREE STUDENTS WHO ENTERED STEM FIELDS BETWEEN 2003 AND 2009 HAD LEFT THESE FIELDS BY SPRING 2009.



USG STEM Initiative



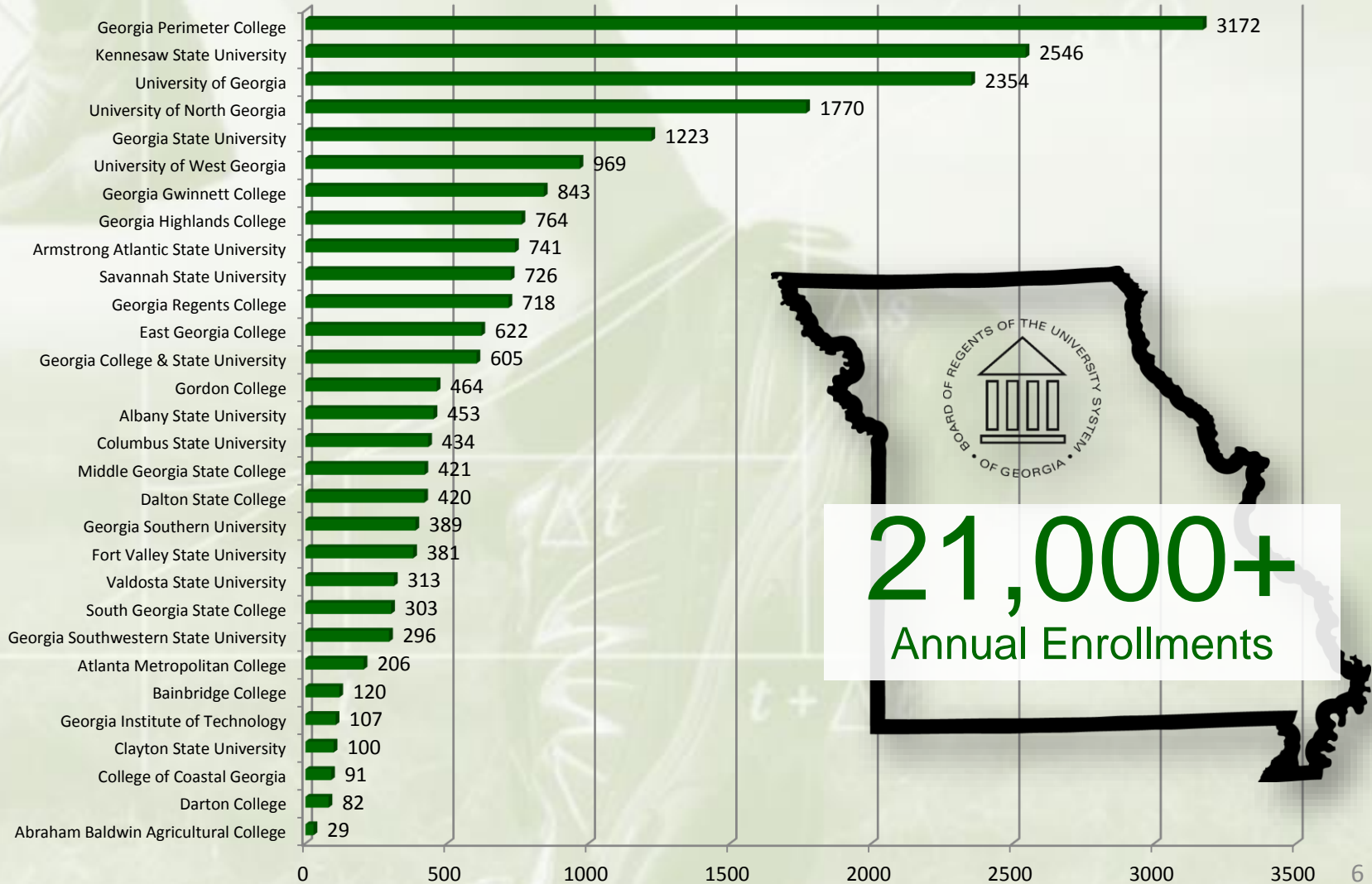
THE USG STEM INITIATIVE WORKS WITH USG INSTITUTIONS AND P-12 PARTNERS TO INCREASE:

1. THE NUMBER OF P-12 STUDENTS WHO PREPARE FOR AND ARE INTERESTED IN MAJORING IN STEM IN COLLEGE,
2. THE SUCCESS RATES (RETENTION, PROGRESSION, AND GRADUATION) AND NUMBER OF STUDENTS IN COLLEGE WHO PURSUE THE STEM DISCIPLINES, AND
3. THE NUMBER OF TEACHERS WHO ARE PREPARED IN SCIENCE AND MATHEMATICS.





Why Precalculus?





Why Precalculus?



37.7
%
Do Not
Succeed

go New Learning Models



“Disruptive innovations within the higher education enterprise require that we think critically about current strategies...”

(USG Strategic Plan, August 2013)

go

Goals



Access

High Quality

Affordability

Performance

Design Team

UNIVERSITY OF GEORGIA

GEORGIA STATE UNIVERSITY

GEORGIA PERIMETER COLLEGE

MIDDLE GEORGIA STATE COLLEGE

VALDOSTA STATE UNIVERSITY

KENNESAW STATE UNIVERSITY

UNIVERSITY OF NORTH GEORGIA

GEORGIA INSTITUTE OF
TECHNOLOGY



**“THE BEST WAY TO
PREDICT THE FUTURE IS TO
INVENT IT.”**



Precalculus Emporium



THE EMPORIUM MODEL

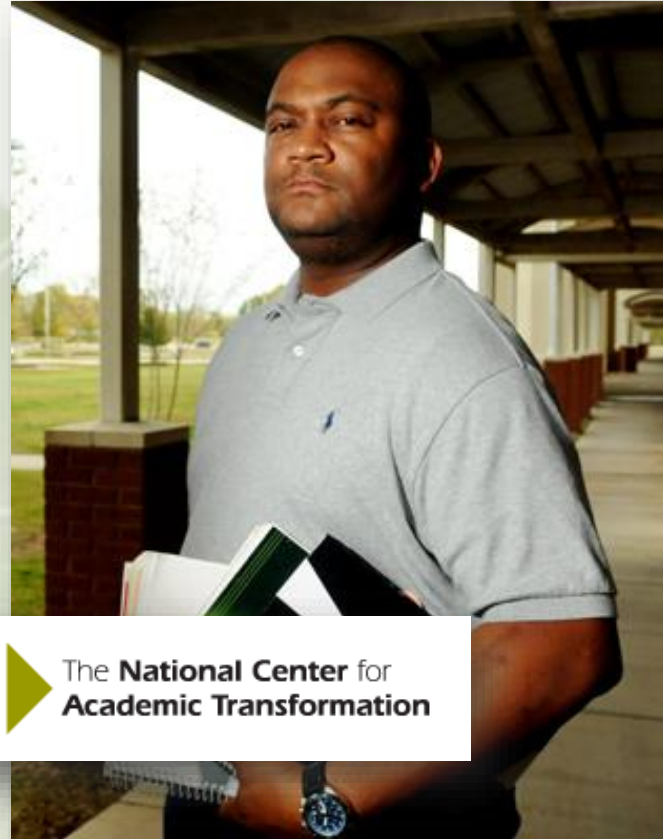
Math Emporium



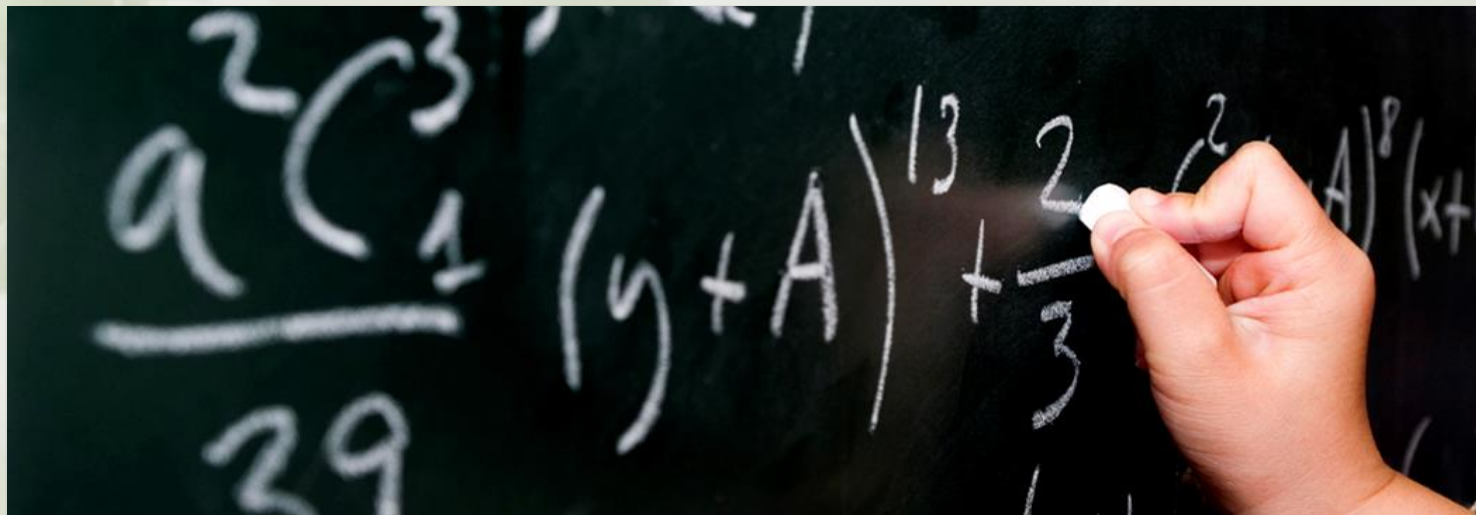
“THE EMPORIUM MODEL IS AS CLOSE TO A SILVER BULLET AS ONE CAN GET IN THE COMPLEX WORLD OF TEACHING AND LEARNING.”

Rigorous Affordability

“REDESIGNS IN MATHEMATICS INCREASED THE PERCENTAGE OF STUDENT SUCCESSFULLY COMPLETING A COLLEGE-LEVEL MATH COURSE BY 25 PERCENT ON AVERAGE WHILE REDUCING THE COST OF INSTRUCTION BY 47 PERCENT ON AVERAGE.”



Ten Years of Research



- **REQUIRE ACTIVE LEARNING**
- **EMPHASIS ON DOING AS OPPOSED TO LISTENING TO HOW TO DO MATH**
- **ENSURE SUFFICIENT TIME ON TASK. MATH ACTIVITY IS REQUIRED (LAB HOURS/EXERCISES)**
- **BUILD IN ONGOING ASSESSMENT AND PROMPT (AUTOMATED) FEEDBACK**
- **MONITOR STUDENT PROGRESS AND INTERVENE WHEN NECESSARY**
- **PROVIDE ONE-ON-ONE, ON-DEMAND ASSISTANCE FROM HIGHLY TRAINED PERSONNEL**



Online Emporium

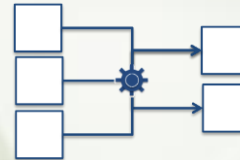
LIVE
STUDY
HALLS



DISCUSSION
FORUMS



TUTORIALS
& TUTORs



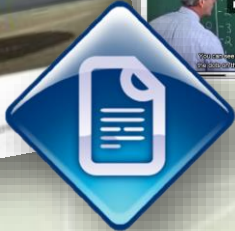
GUIDED
PRACTICE



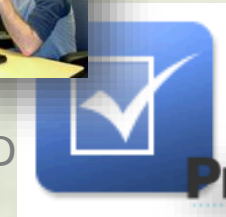
CONTEXT



CONTENT



PROCTORED
TESTING



ProctorU





Precalculus Emporium



EVOLVING DESIGN



Course Timeline

FA 2013

DESIGN

Discussion Forum
Online Study Hall
Homework
Quizzes & Tests
Online Proctoring



SP 2014

PILOT I

5 Institutions
212 Students
6 Instructors
2 GTAs



SU 2014

REDESIGN

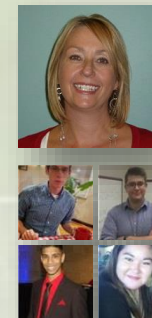


Orientation Module
Gated Progress
Module Balancing
Weekly Pacing
New Videos
Adjusted Scoring
Practice Tests
3 Proctored Tests
Group Engagement

FA 2014

PILOT II

1 Institution
74 Students
1 Instructor
2 GTAs
2 Peer Mentors



SP 2015

PILOT III

3 Institutions
150 Students
3 Instructors
2 GTAs
6 Peer Mentors

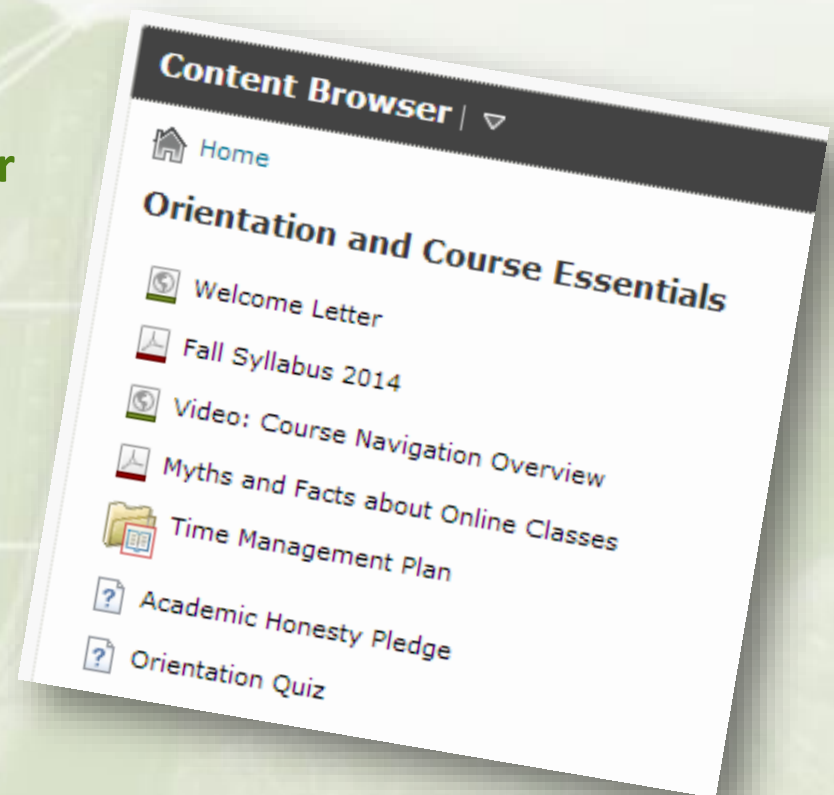


Supplemental
Instruction
Study Groups

Course Elements

NEW ORIENTATION MODULE

1. Welcome Letter from the Instructor
2. Fall Syllabus 2014 Clarifications
3. Course Nav Overview Video
4. Myths and Facts
5. Time Management Plan – Activity
6. Academic Honesty etc. – Activity
7. Orientation Quiz – Gatekeeper



Course Elements

MODULE BALANCING

New Module 1: Chapters 2.2 – 2.5, Test September 11-12 (**Proctored**)

New Module 2: Chapters 2.6 – 4.5, Test October 8-9

New Module 3: Chapters 4.6 – 5.6, Test November 5-6 (**Proctored**)

New Module 4: Chapters 5.7 – 6.6, Test December 4-5

Chapters 7.1 – 7.2, Final Exam Dec. 11-12 (**Proctored**)

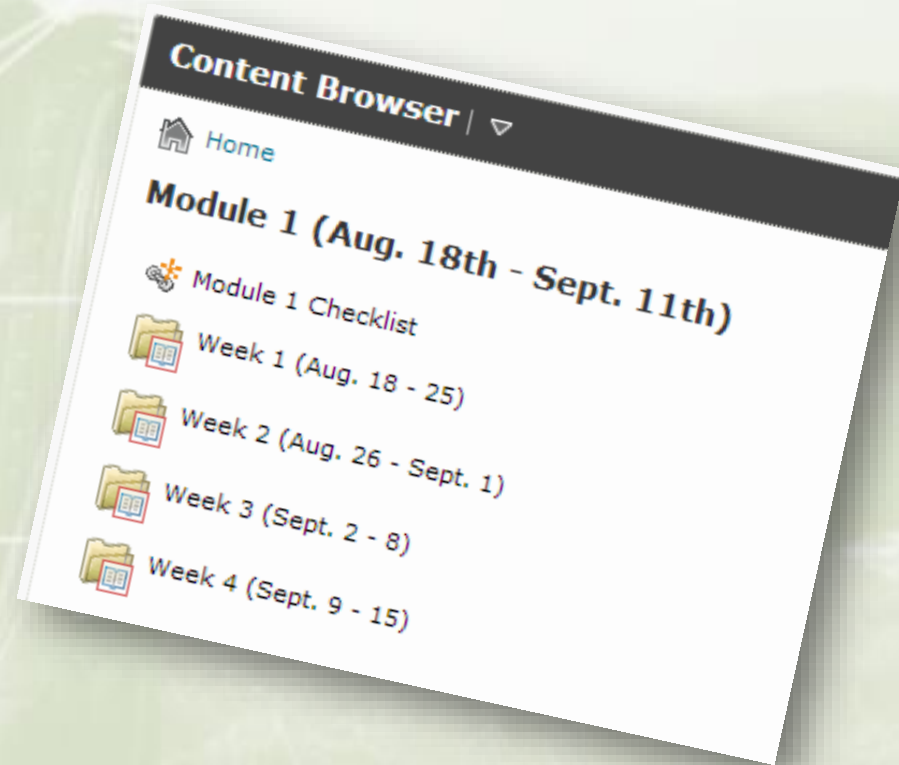
No Midterm – 3 Proctored Exams – Practice Test before Mod 1 Test

Element	Grade %
Homework	12%
Quizzes	12%
Mod Tests (4)	12.5% ea = 50%
Final Exam	25%
Participation	1%
TOTAL	100%

Course Elements

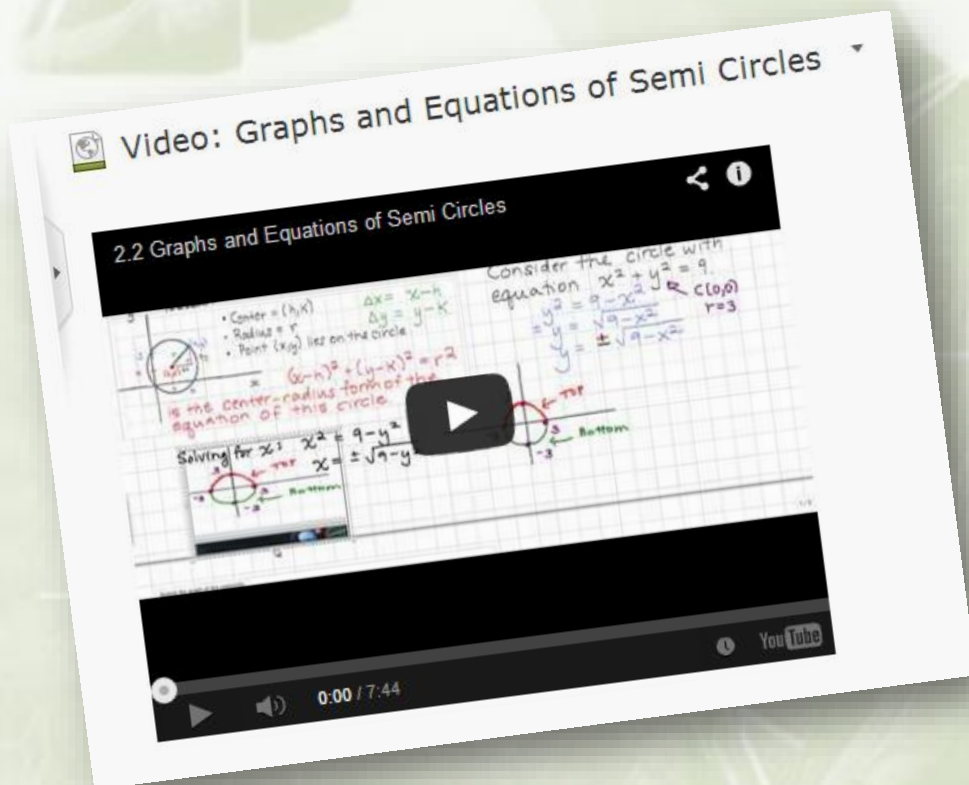
WEEKLY PACING & STRUCTURE

- Content arranged by week
- Due Date every Monday night
- Time Management plan submitted during Orientation
- Progress monitoring and communication as needed
- Administrative Withdrawal for non-participation



Course Elements

NEW CONTENT

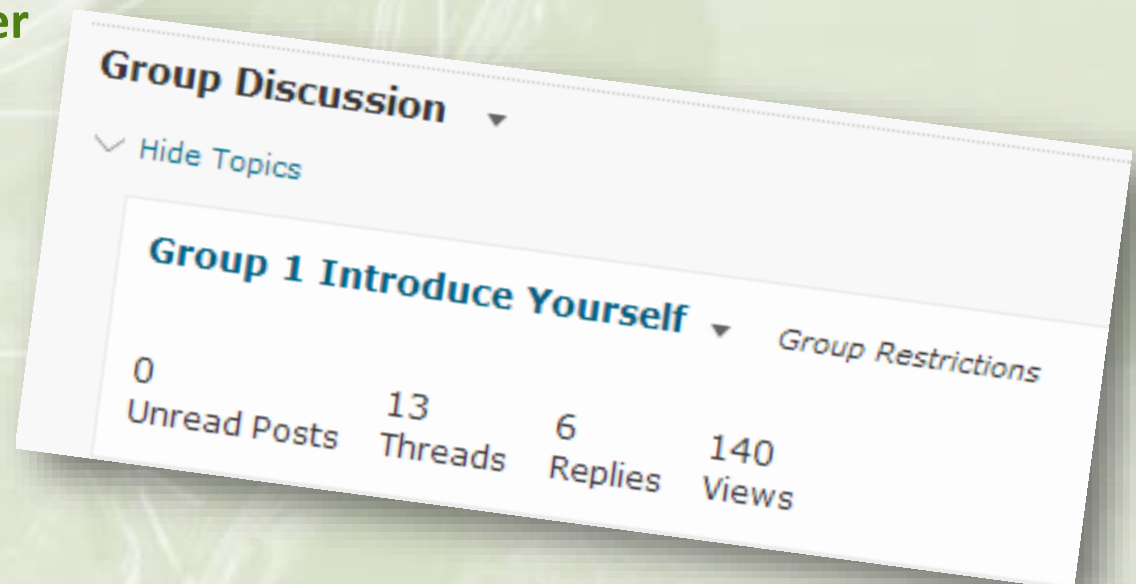


- 175 Instructor-made Videos
- 2 – 10 minutes in Length
- All Captioned
- Hosted on YouTube
- Embedded in GoVIEW

Course Elements

GROUP ENGAGEMENT

- Automatic Enrollment to Groups
- 15 students per group
- Private forums for each group
- Two 'Student Success Peer Mentors' monitor and
- Encourage small group discussion
- Less threatening
- environment



The screenshot shows a user interface for a group discussion. At the top, it says 'Group Discussion' with a dropdown arrow. Below that is a link 'Hide Topics' with a checkmark. The main section is titled 'Group 1 Introduce Yourself' with a dropdown arrow and a link 'Group Restrictions'. Below the title, there are four statistics: '0 Unread Posts', '13 Threads', '6 Replies', and '140 Views'.

0	13	6	140
Unread Posts	Threads	Replies	Views

Course Elements

MARKETING

The banner features a photograph of a person's legs running on a path, overlaid with a graph of a function $s(t)$. The graph shows a curve with a tangent line at a point t , and a secant line connecting points t and $t + \Delta t$. The vertical axis is labeled s and the horizontal axis is labeled t . The banner text includes:

online **precalculus**
The University System of Georgia

Take Math 1113 online.

Math 1113 Precalculus Emporium is an entirely online course that offers schedule flexibility and numerous resources for students. This course covers the same content and aligns with the same learning objectives as the campus-based three-credit course.

Navigation tabs: Course Description, Course Preview, Participating Institutions, FAQ's, Student Success

- New and improved website: onlineprecalculus.com
- New bookmarks for advisors
- Revised course blurbs in Banner
- Pre-semester email communication for enrolled students

The Students

- ~ 50/50 Male / Female
- 43% with Online Course Experience
- 61% Chose Course Because Online
- Range of Traditional College Age and Older Adults





Course Data

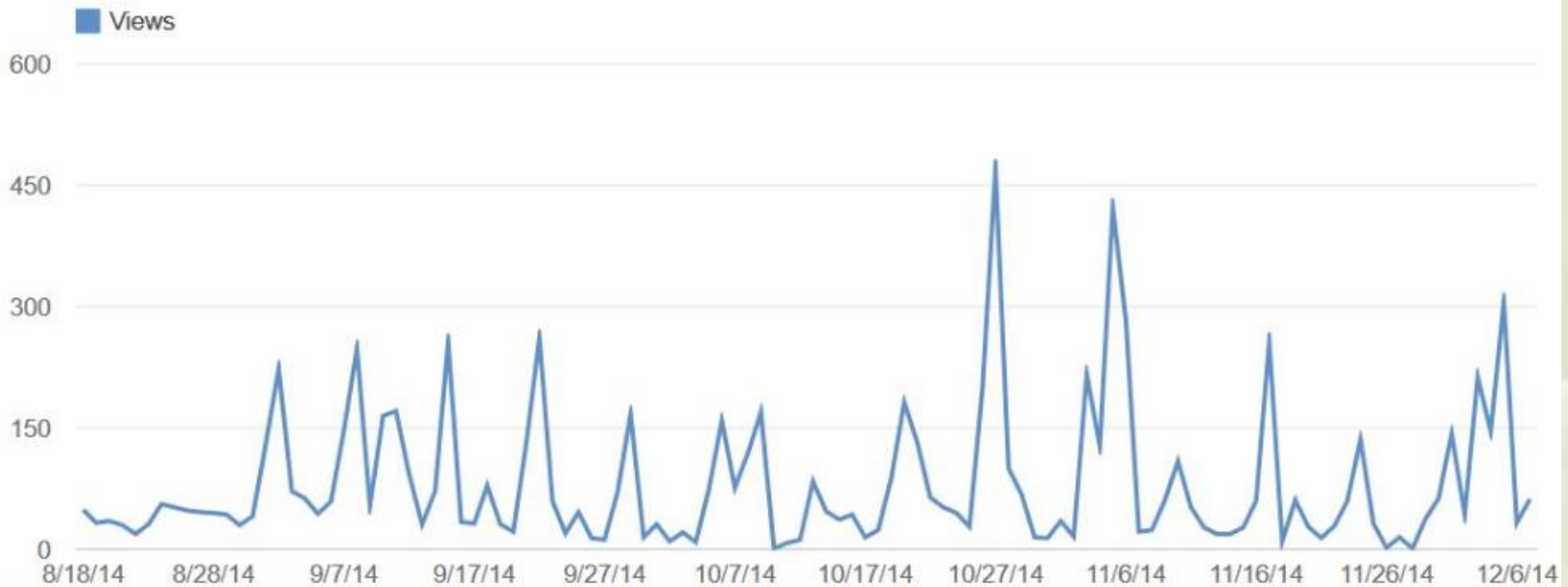
VIEWS
8,994

**ESTIMATED MINUTES
WATCHED**
23,214

Compare metric ▾

Daily ▾

Show growth ⓘ



Feedback

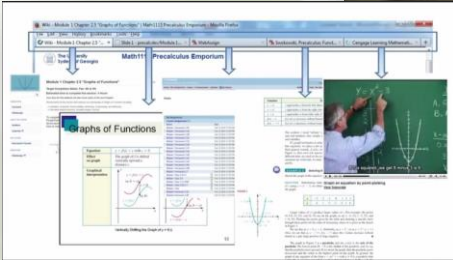
“Thank you so much for your hard work in putting this class together and teaching everything clearly online! I am so glad to be taking this class with you.”

“I think the content videos are a perfect length you teach everything that we need to know in the short time period! I love them!!”

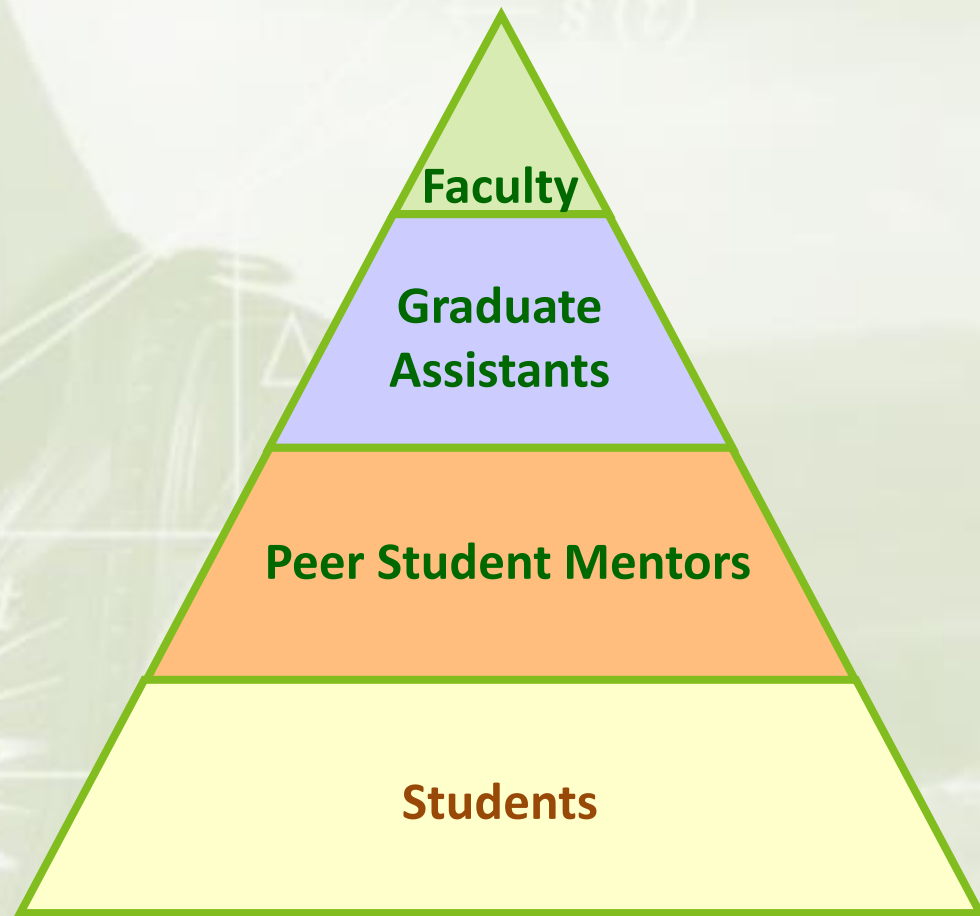
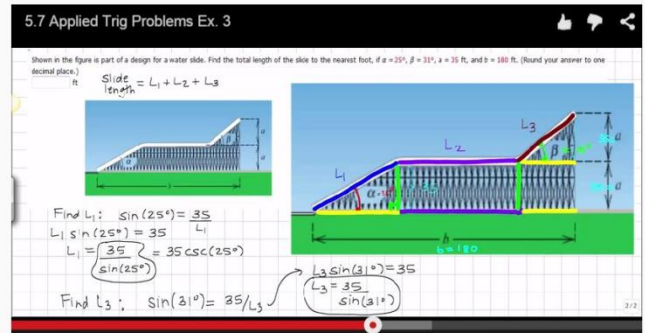
“I definitely think it is an effective way of teaching and definitely working for me! I have not made below a 97 on any assignment :)”

Reducing Costs

CENGAGE Learning



Video: "Applied Trig Problems Ex. 3"



MATERIALS

INSTRUCTIONAL DELIVERY



Moving the Needle



Access



High Quality



Affordability



Performance





Next Steps



“YOU NEVER CHANGE THINGS BY FIGHTING THE EXISTING REALITY. TO CHANGE SOMETHING, BUILD A NEW MODEL THAT MAKES THE EXISTING MODEL OBSOLETE.”

Student Study Groups



**“Tell me, and I forget, show me, and I remember,
involve me and I understand.”**

(Chinese Proverb)

30 Years of Research



- **BASED ON MULTIPLE, PROVEN COGNITIVE LEARNING THEORIES AND COLLABORATIVE LEARNING PRACTICES**
- **PROMOTES THE GROWTH OF INDEPENDENT LEARNERS**
- **NON-EXPERT, PEER-FACILITATED STUDY GROUPS**
- **EMPHASIS ON DEVELOPING STUDY STRATEGIES (THINKING, REASONING, RESPONSIBILITY AND REFLECTION)**
- **THE MORE STUDENTS PARTICIPATE IN STUDY GROUPS THE HIGHER THEIR FINAL GRADE**

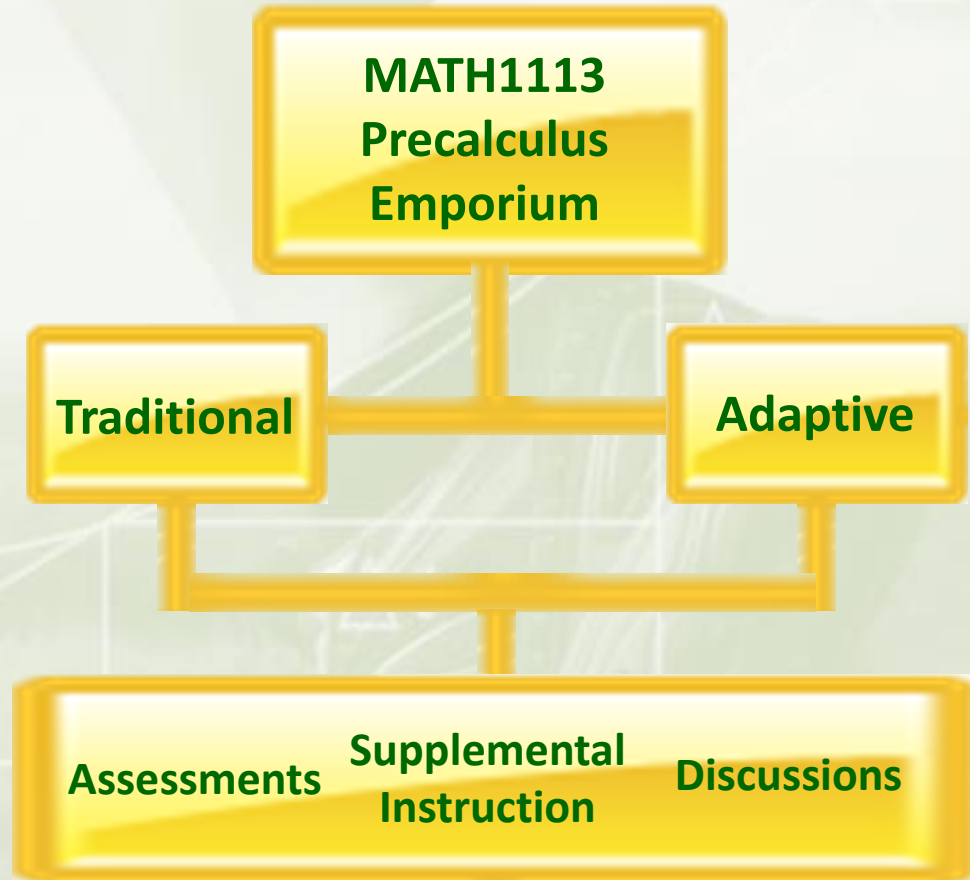


Online Study Groups





Performance



MATCHING STUDENT CHARACTERISTICS WITH FORMAT

go

Discussion

